

# STR

## In-Tank suction strainers



# Flow rates to 250 gpm

# Series STR

### STR (Materials)

- 1 - Connection: Nylon
- 2 - Support tubes: Galvanized steel
- 3 - Cap: Nylon
- 4 - Valve: Nylon - Steel

### Filtration

- M60 - 60 micron
- M90 - 90 micron
- M250 - 250 micron

### Bypass valves

- Opening pressure: 4.35 psi ± 10%

### Temperature

- From -13°F to +230°F

**Oil flow direction from exterior to interior.**

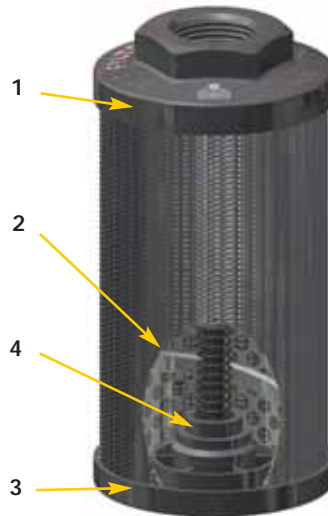
### Compatibility

- To ISO 2943; valid for mineral oils (type HHHM-HR-HV-HG to ISO 6743/4) and synthetic fluids (type HS-HFDR-HFDS-HFDU to ISO 6743/4).
- For aqueous emulsions (type HFAE-HFAS to ISO 6743/4) and other fluids different from those indicated, contact Engineering - Sales Department.

### Filter body $\Delta p$ pressure drop

The curves are plotted using mineral oil reference viscosity 30 mm<sup>2</sup>/s (cSt) (150 SUS) to ISO 3968.

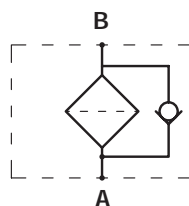
STR with bypass



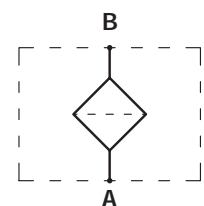
STR without bypass



Style B

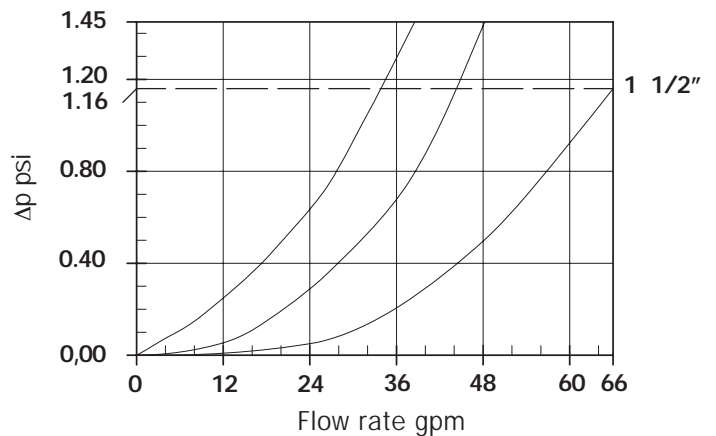


Style S

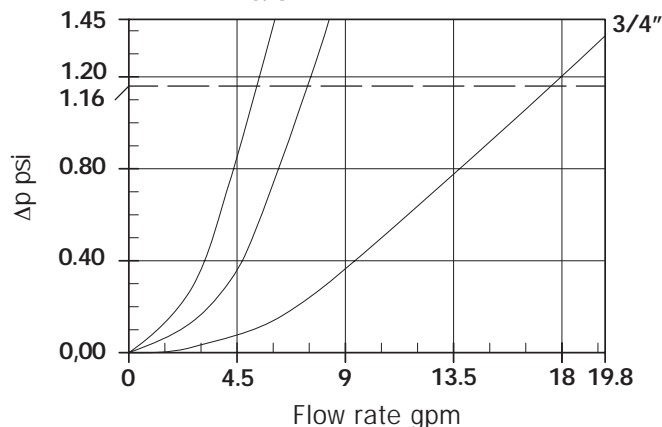


STR

1" 1 1/4"

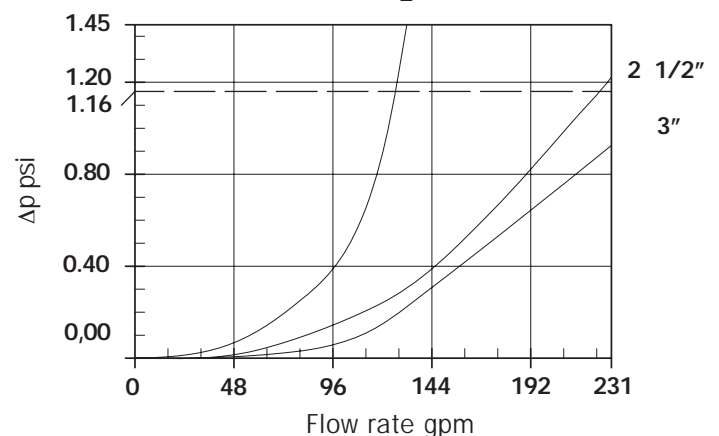


STR 3/8" 1/2"

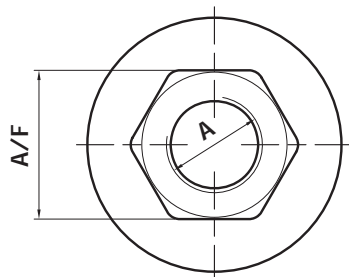
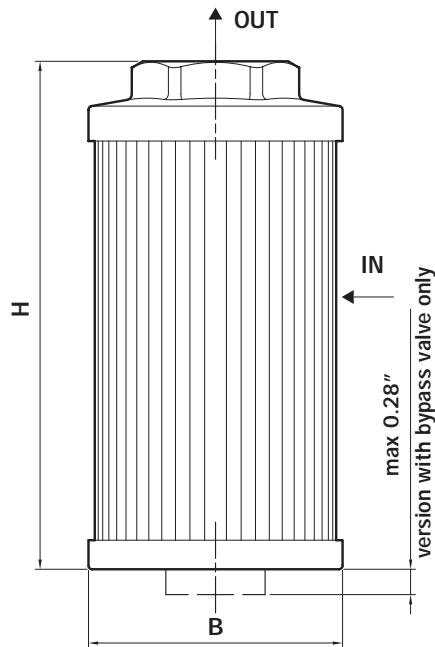


STR

2"



# Dimensions

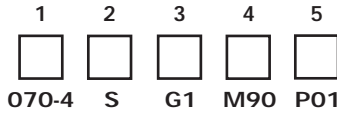


Size	A	B (inch)	H (inch)	A/F (mm)	Weight (lbs)
045-1 G1	G 3/8"				0.33
045-1 G2	3/8" NPT				0.33
045-2 G1	G 1/2"	1.81"	4.13"		0.42
045-2 G2	1/2" NPT			30	0.42
050-1 G1	G 3/8"				0.24
050-1 G2	3/8" NPT				0.24
050-2 G1	G 1/2"	2.05"	3.11"		0.24
050-2 G2	1/2" NPT				0.24
065-1 G1	G 1/2"				0.42
065-1 G2	1/2" NPT		4.33"		0.42
065-2 G1	G 3/4"				0.49
065-2 G2	3/4" NPT	2.56"			0.49
065-3 G1	G 3/4"				0.53
065-3 G2	3/4" NPT		5.67"		0.53
065-4 G1	G 1"				0.49
065-4 G2	1" NPT			41	0.49
070-1 G1	G 1/2"				0.40
070-1 G2	1/2" NPT		3.73"		0.40
070-2 G1	G 3/4"				0.37
070-2 G2	3/4" NPT	2.76"			0.37
070-3 G1	G 3/4"				0.42
070-3 G2	3/4" NPT		5.55"		0.42
070-4 G1	G 1"				0.53
070-4 G2	1" NPT				0.53
086-1 G1	G 1 1/2"				0.73
086-1 G2	1 1/2" NPT		5.63"		0.73
086-2 G1	G 2"				0.66
086-2 G2	2" NPT				0.66
086-3 G1	G 1 1/2"				0.95
086-3 G2	1 1/2" NPT	3.39"	7.91"		0.95
086-4 G1	G 2"				0.88
086-4 G2	2" NPT				0.88
086-5 G1	G 1 1/2"				1.17
086-5 G2	1 1/2" NPT		10.28"		1.17
086-6 G1	G 2"				1.10
086-6 G2	2" NPT				1.10
100-1 G1	G 1 1/4"		5.39"		1.04
100-1 G2	1 1/4" NPT			69	1.04
100-2 G1	G 1 1/4"				1.28
100-2 G2	1 1/4" NPT				1.28
100-3 G1	G 1 1/2"				1.21
100-3 G2	1 1/2" NPT	3.90"	8.94"		1.21
100-4 G1	G 2"				1.12
100-4 G2	2" NPT				1.12
100-5 G1	G 1 1/2"		5.39"		0.95
100-5 G2	1 1/2" NPT				0.95
140-1 G1	G 1 1/2"				1.54
140-1 G2	1 1/2" NPT		6.30"		1.54
140-2 G1	G 2"				1.50
140-2 G2	2" NPT				1.50
140-3 G1	G 2"				2.07
140-3 G2	2" NPT	5.12"	10.31"		2.07
140-4 G1	G 2 1/2"				2.43
140-4 G2	2 1/2" NPT		10.71"		2.43
140-5 G1	G 3"				2.20
140-5 G2	3" NPT			101	2.20
140-6 G1	G 3"		12.99"		2.58
140-6 G2	3" NPT				2.58

## Suction Filter

STR

Example: STR



Box Qty	P/N	Size
12	045-1	3/8"
12	045-2	1/2"
12	050-1	3/8"
12	050-2	1/2"
6	065-1	1/2"
6	065-2	3/4"
6	065-3	3/4"
6	065-4	1"
6	070-1	1/2"
6	070-2	3/4"
6	070-3	3/4"
6	070-4	1"
6	086-1	1 1/2"
6	086-2	2"
6	086-3	1 1/2"
6	086-4	2"
6	086-5	1 1/2"
6	086-6	2"
6	100-1	1 1/4"
6	100-2	1 1/4"
6	100-3	1 1/2"
6	100-4	2"
6	100-5	1 1/2"
	140-1	1 1/2"
	140-2	2"
	140-3	2"
	140-4	2 1/2"
	140-5	3"
	140-6	3"

### 2 - Valve

- S Without
- B With bypass

### 3 - Connection

- G1 BSP thread
- G2 NPT thread

### 4 - Filter element

- M60 60 micron wire
- M90 90 micron wire
- M250 250 micron wire

### 5 - Options

- P01 MP Standard